

# ASHORNE 4



All Ali Robinson products are carefully and individually finished by hand and therefore some variation in colour and patina will occur between pieces and over time. The image serves as a guide only.



## ASHORNE 4 - Double Vitrine

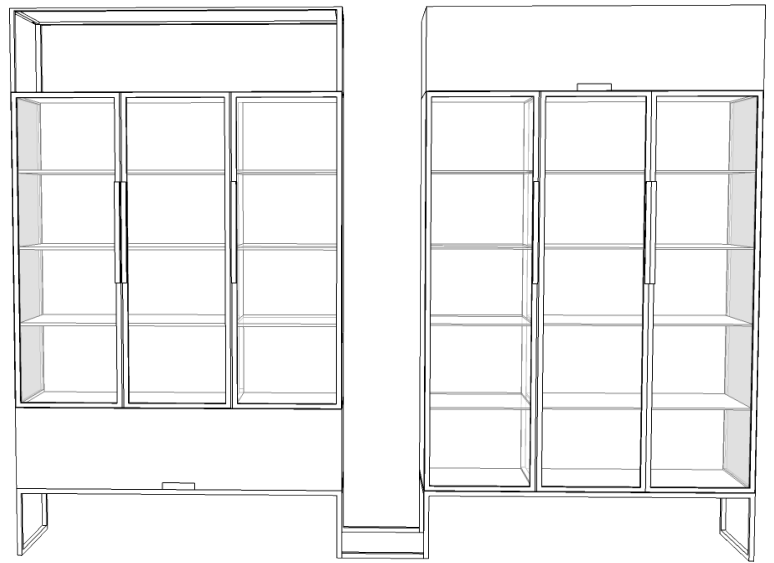
### FINISHES

Legs: Patinated black steel | Doors: 6 patinated steel doorframes with toughened white glass | Shell: variety of patinated, perforated and highly polished steel | Shelves: 7 adjustable toughened white glass, 2 adjustable coloured sprayed metal and 5 adjustable patinated steel | Storage boxes: sprayed metal storage boxes with flush magnetic handles.

### ALTERNATIVE FINISHES



Any colour available within the RAL D2 colour chart



### DIMENSIONS:

2700 W 430 D 2000 H

### BESPOKE:

Bespoke sizes, materials and specifications available.



### TYPE:

Suitable for Domestic and Contract applications.

### LEAD TIMES:

8 weeks from receipt of deposit

### CARE

Sprayed steel: soap and water and thoroughly dry | Patinated black steel and Perforated steel: Briwax | Highly polished steel: Ambersill Aerosol multi purpose metal cleaner

